

CONTAMINANTS in DIESEL FUEL

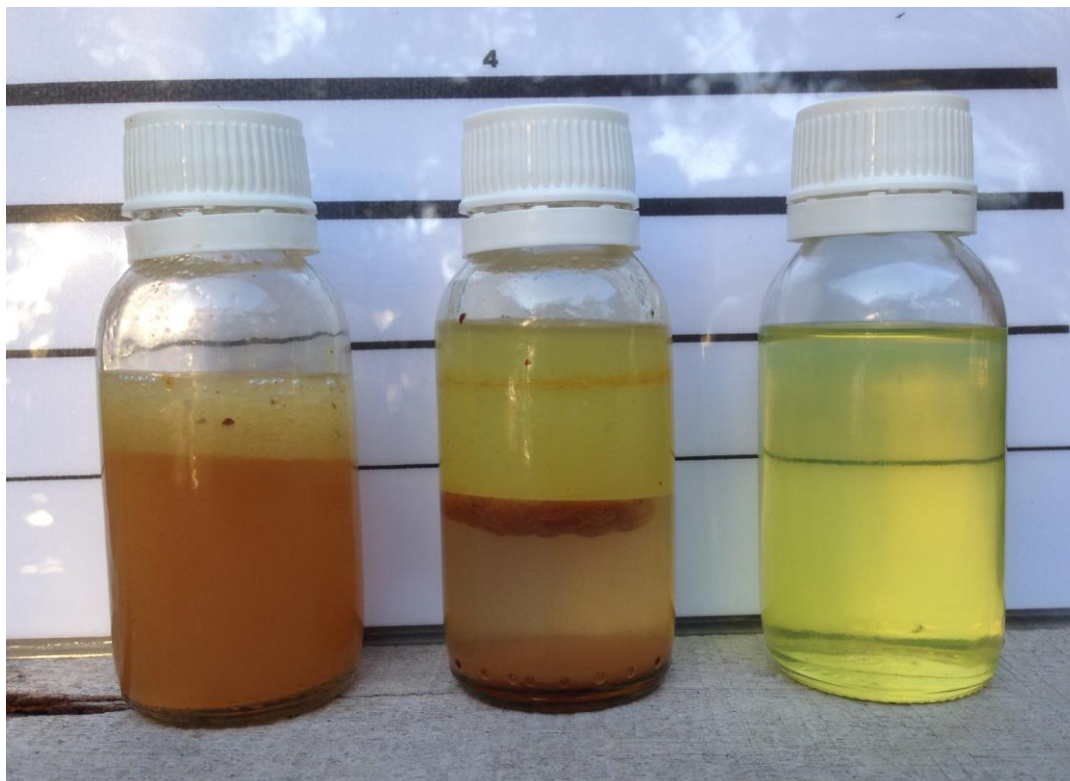
Diesel Fuel (ULSD) breaks down more rapidly than most people realise. This is mainly due to the presence of water and excessive contaminants.

The most likely **Contaminants** include;

Water - finely suspended droplets of water can give a milky, hazy appearance. This can be a result of moisture/condensation and/or high flow pumps. Since most Diesel tanks are vented to atmosphere, condensation will settle out on the bottom of the tank.

Fungus and Bacteria - producing gummy deposits, gels, discoloration and black sediment/sludge on bottom of the tank. Some aggressive bacteria have been found to spread up through the Diesel like a web or mass.

Suspended Particulates - can consist of mineral and metallic dusts from atmosphere, pipes & tanks, plus degrading fungal colonies.



Contaminants can start appearing in stored Diesel Fuel in as little as one month.

This is referred to as "**Accelerated Ageing**"

To prevent costly damage to Generators and Pumps in an Emergency Power Supply (EPS) situation, these contaminants must be removed effectively and regularly. **EPS failure, in a hospital environment, could be life threatening!**



An automatic **Diesel Fuel Maintenance System** can be specified and installed onto any size bulk storage tank.

These systems ensure that Diesel fuel is ALWAYS clean & dry and ready to use.

"CONTACT US FOR AN OBLIGATION FREE CONSULTATION OR VISIT"

"When the lights go out.....it's too late to clean your fuel"